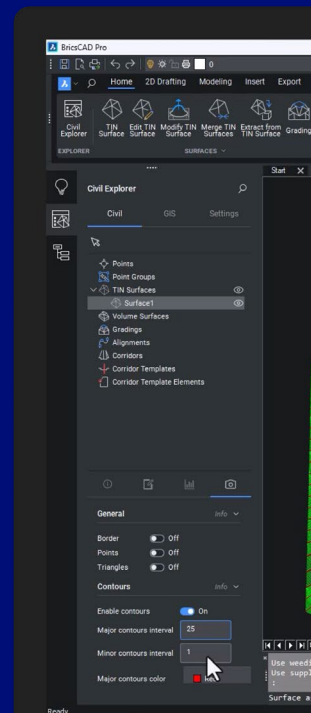
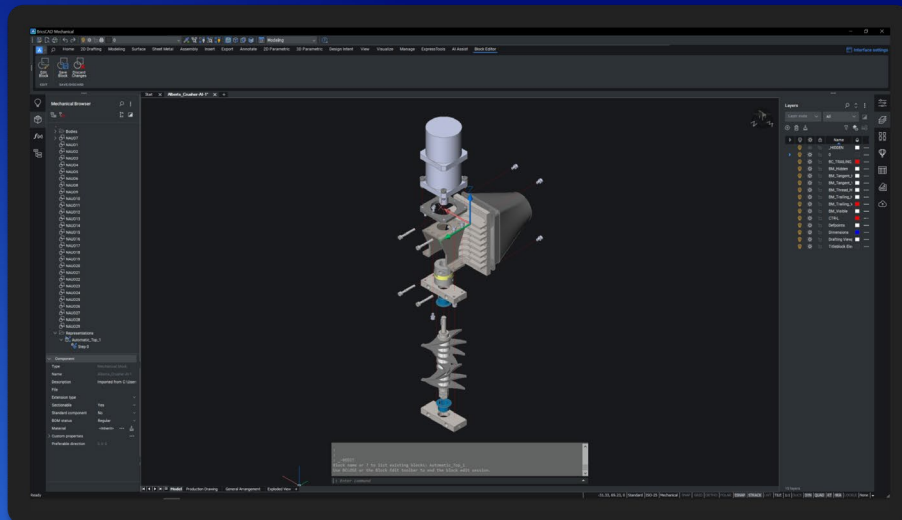
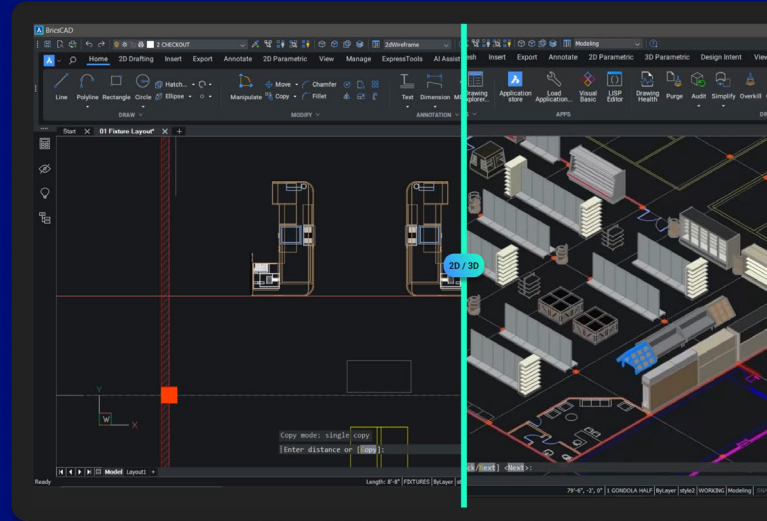
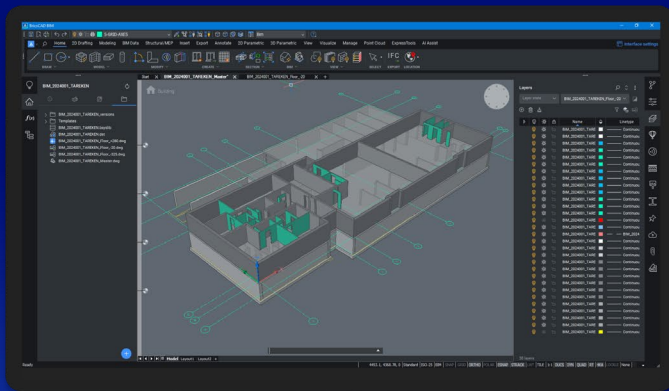


Migration made simple

Make the move to BricsCAD® in just a few hours.
Don't take our word for it, prove it to yourself.

October 2023



Introduction

Migrating to BricsCAD® has never been easier. In this guide, you'll learn how to transition from AutoCAD® quickly and painlessly.

BricsCAD works very much like AutoCAD® and supports much of the same functionality including Xrefs, plotting, sheetsets, PDF attach/ import, and viewports. The tips and pointers included will help speed up your transition.

There are just 4 simple steps to migrate from your existing CAD software to BricsCAD

Step 1: Download and install BricsCAD

Step 2: Explore the familiar user interface

Step 3: Begin the migration to BricsCAD

- Plan your migration
- Execute your migration
- Check your migration settings
- Convert your Dynamic Blocks

Step 4: Test a project with BricsCAD

The transition shouldn't take more than a few hours. After which you'll have a new version of an existing drawing/model in BricsCAD. It's that simple, so, let's get started.

Step 1: Download and Install BricsCAD®

External Resource: The BricsCAD Download
<https://www.bricsys.com/bricscad-download>

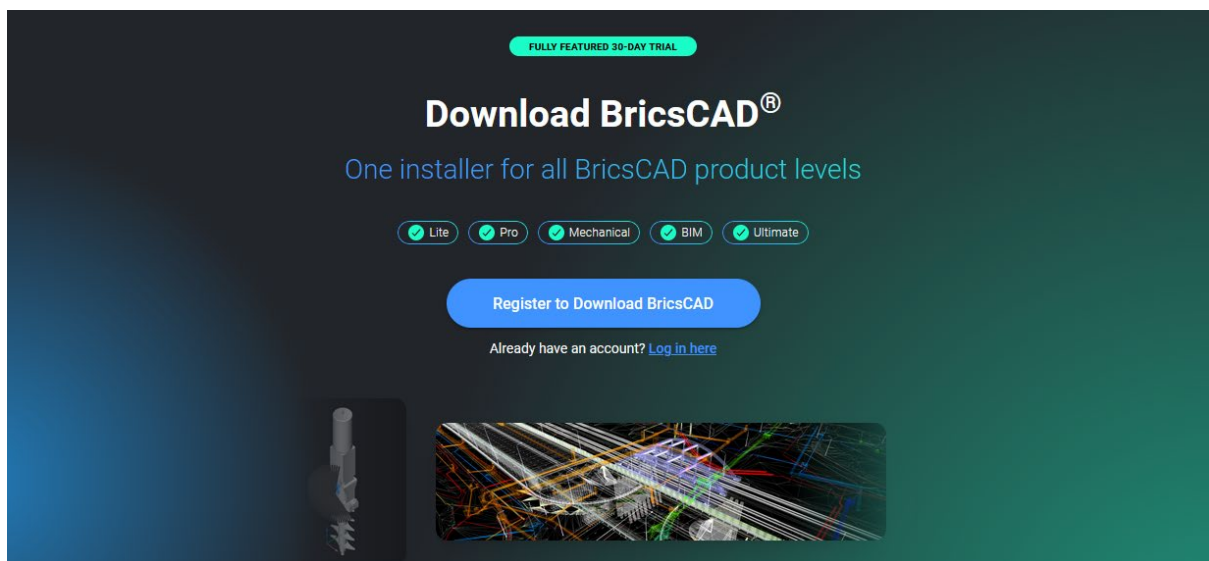
Create Bricsys Account & Download the BricsCAD® Free Trial

Register your Bricsys® account, this takes about 30 seconds. Then log into the account.



Download BricsCAD®

You can now download and install BricsCAD in 15 different languages. After specifying your download options, agree to the Terms of Use and choose Download.



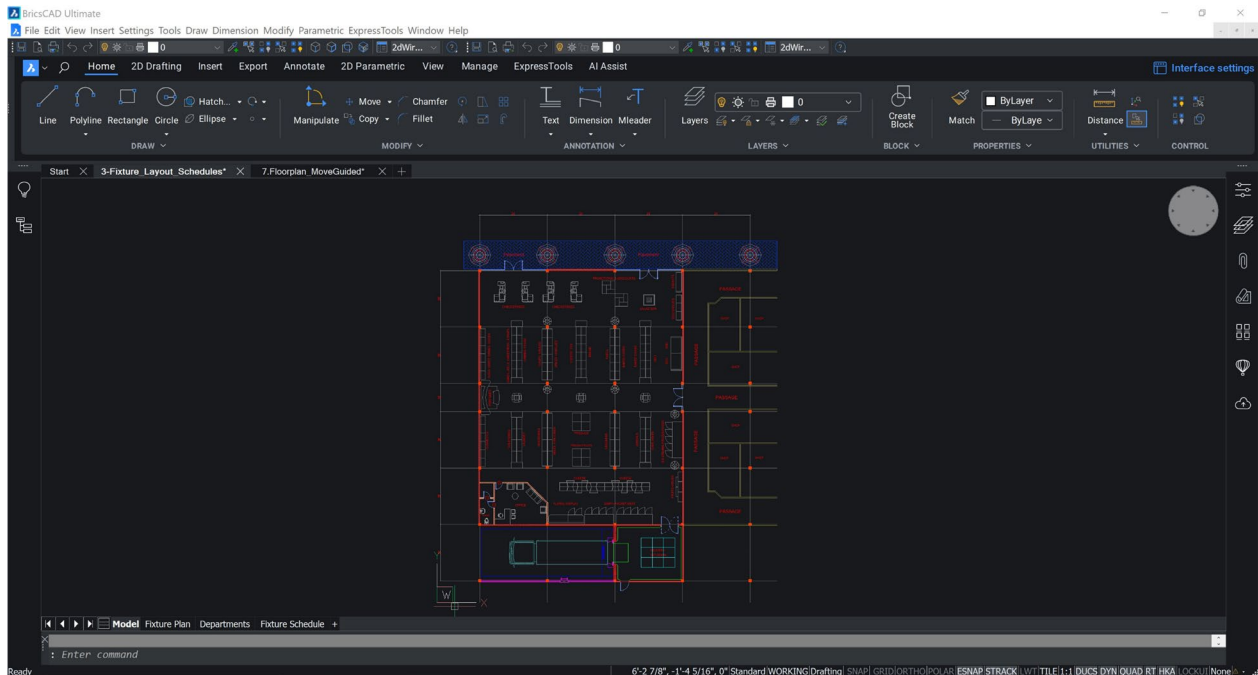
Once the download is complete, navigate to the installer file and double-click to start the installation process.



Note: this process will be different depending on the operating systems selected.

You are now ready to go, launch BricsCAD from the desktop or menu.

Step 2: Explore the Familiar User Interface

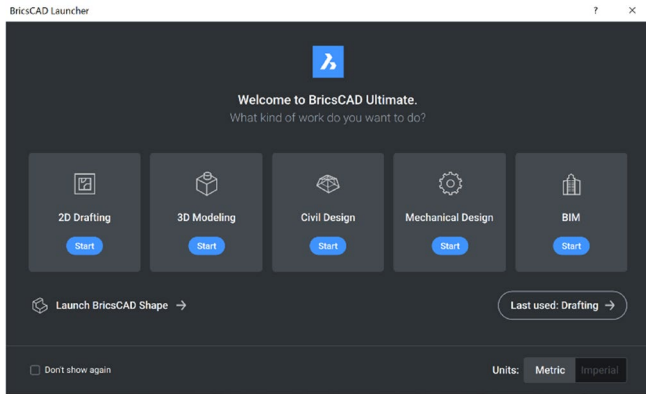


BricsCAD® is simple to learn and comfortable from the start. The “Out-of-the-box” installation has a consistent look and feel.

- Paper & Model Space
- Ribbon/Panel Interface
- Command Line & Status Bar
- Similar Commands and Menus
- Familiar Toolbar Layout
- Dockable or Floating Panels
- Context Menus
- Document Tabs
- Multiple Workspaces

Language Support & Global Use

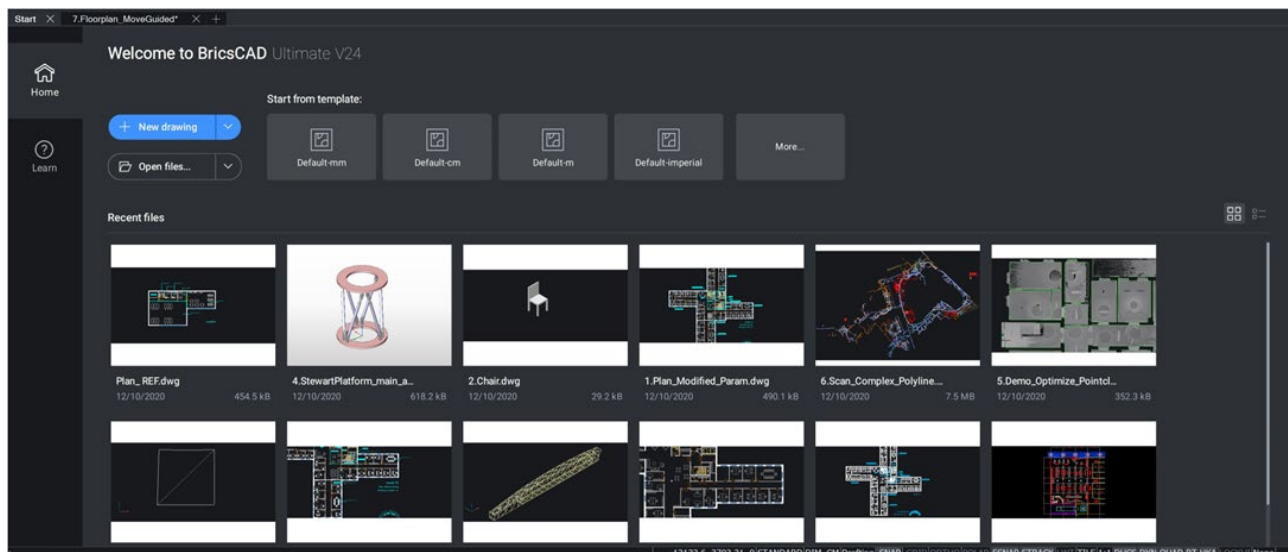
Should you want to use more than the English version of BricsCAD, you can. Just download that language version and install it. Your existing license keys will work for any of the 15 current localized BricsCAD versions. Any BricsCAD license key works anywhere in the world for no extra charge.



Use the BricsCAD® Launcher to “Get Started”. The 30-day BricsCAD Trial contains 2D, 3D, Civil Design, Mechanical, and BIM workspaces. Most new users start by selecting the “2D Drafting” icon.

External Resource: BricsCAD Launcher

https://help.bricsys.com/document/_guides--BCAD_getting_started--GD_launchingbricscad/V23/EN_US?id=165079146194



Access recent drawings, open new .dwg/.dwt or browse to an existing dwg file and you're ready to start.

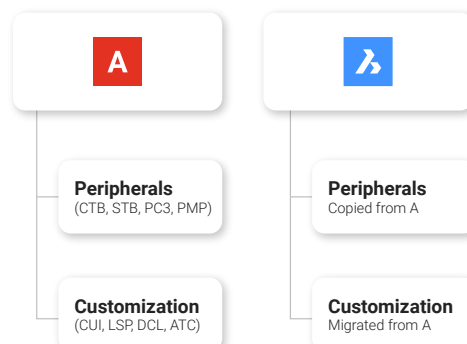
Step 3: Begin the Migration to BricsCAD

Plan your migration

BricsCAD, like any CAD program, is constantly accessing a variety of files to do its job and it is likely most of those files are coming from a network location. In the BricsCAD SETTINGS command, you can set all the various pathing locations for support files, XRef paths, plotter locations, etc., and then test to be sure it all works.

Run Parallel A and B installations

- Establish network folders
- Migrate customization
- Replicate peripherals
- Clean, minimum, migration
- Test B while still running A

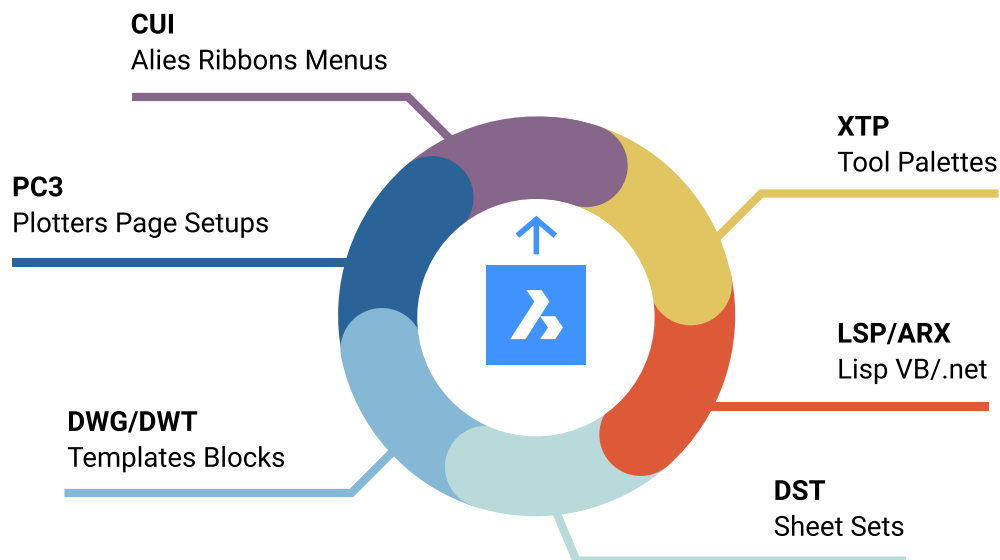


Identify the tools that you want to migrate

- Custom CUI's, Custom Alias' from .pgp.
- LSP/ARX Files including customizations in ACAD.LSP and ACADDOC.LSP, VB, and .NET routines
**Some files may need to be recompiled. [See BricsCAD Developer Portal](#)*
- Tool Palettes (.xtp)
- Fonts (.shx files)
- DST Files (Sheet Sets)
- DWG/DWT Templates and Blocks
- PC3 Files, PMP, Plotters, Plot Styles
- Custom Hatch Patterns

A new BricsCAD® Profile (.arg) will need to be created based on the information above and the respective file locations. The use and location of third-party applications are also needed.

**Profiles from other CAD software will not import correctly.*

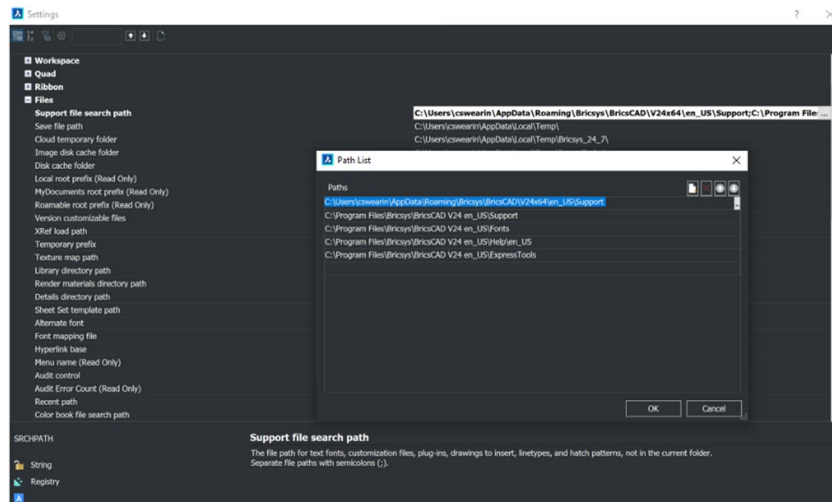


Clean-up as you migrate!

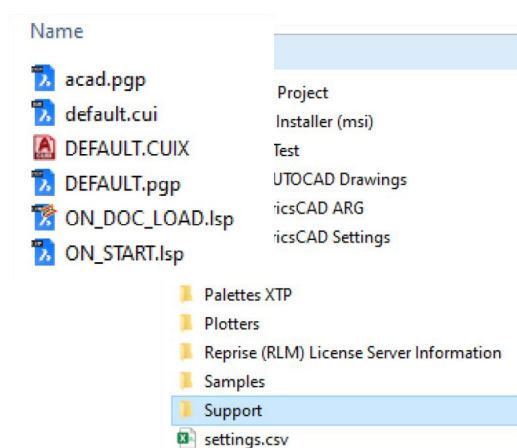
- Remove backup files
- Remove obsolete programs
- Simplify folder structure
- Clean blocks/palettes
- Migrate the minimum!

Migrate environmental folders and content

- Create folders to replicate environment folders for library content like blocks and LISP files
- Copy/clean as you go
- Rename key files as you go



If you have customized programs (LSP), template files (DWT), block libraries (DWG), menus (CUI), tool palettes (XTP), or other components that your users are already familiar with you'll want to bring them over to BricsCAD®. Think about how you'd like the files to be organized into folders and start copying the files you'll need from the old locations to the new BricsCAD location. Slight modifications may happen therefore we should be modifying the copied files in order not to disrupt the current environment as we will want to test these environments concurrently.



Where are the existing support files located?

- Centralized Server?
- Individual Local Machines?
- A combination of network and individual drives?

Exact Files for potential renaming and appropriate folder placement need to be provided.

Make BricsCAD work the way you want

Making BricsCAD function as similar to the old system your users already know is a great way to improve user satisfaction, raise productivity, and shorten training times for BricsCAD implementation.

Basic Support Files

Create a standard BricsCAD® folder in which to house all modified BricsCAD files. Creating subfolders for each support file type should be simple. Copy the custom content from your current support files and each respective subfolder, and paste them accordingly.

Simple support folders are recommended!

- Copy the custom content from ACAD.PGP paste into DEFAULT.PGP in BricsCAD
- Copy the custom content from ACAD.LSP paste into ON_START.LSP in BricsCAD
- Copy the custom content from ACADDOC.LSP paste into ON_DOC_LOAD.LSP in BricsCAD

External Resource: Video – Moving from A to B: Migration Strategies. And other BricsCAD videos

<https://lessons.bricsys.com/courses/enrolled/2082457>

PGP File

Command aliases are saved in a *.pgp file (ProGram Parameters file). By default, the “DEFAULT.pgp” file in the support directory of the Roamable Root folder is used.

Copy custom aliases from “ACAD.pgp” from AutoCAD® location; Paste into “DEFAULT.pgp” within BricsCAD® Support Folder.

External Resources: Command Aliases Help Page

<https://help.bricsys.com/document?id=165079142640>



Key Tip: No naming overlap!

LISP (.lsp)

When BricsCAD® starts, it automatically looks for an AutoLISP file called ON_START.LSP and executes any code it finds in the file, so you need to be sure it exists and that BricsCAD can find it. All you must do is place the ON_START.LSP file in BricsCAD's support directory – you can manage this using the **Settings** command and looking under Program Options / Files.

Copy custom content from "ACAD.LSP" from AutoCAD® location; Paste into "On_Start.LSP" within BricsCAD Support Folder

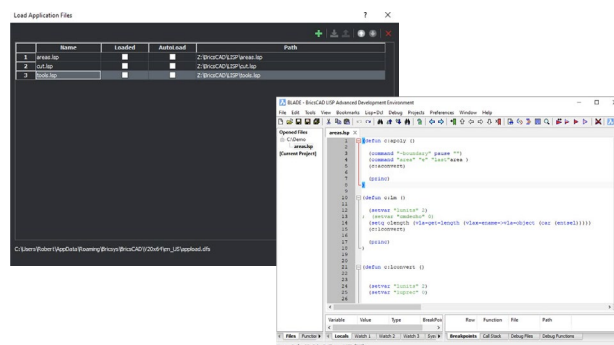
- Rename Key Files
- Watch out for Hard-Coded Pathing and AutoCAD® specific folders

To enable auto-launching your program set the ACADLSPASDOC system variable to 1 or simply toggle the option in Settings / Program Options / System. If "Off", BricsCAD only loads these files for the first drawing.



Migrate LISP

- Rename key files
- Open via APPLOAD. BLADE or ON_START
- Restart BricsCAD to verify
- Watch out for:
 - Hardcoded paths
 - AutoCAD® specific folders



```
(if (findfile "x:\\lisp\\standards.lsp")
    (load "x:\\lisp\\standards.lsp")
)

(prompt "\nBricsCAD startup routine loaded.")
```

External Resource: LISP Migration

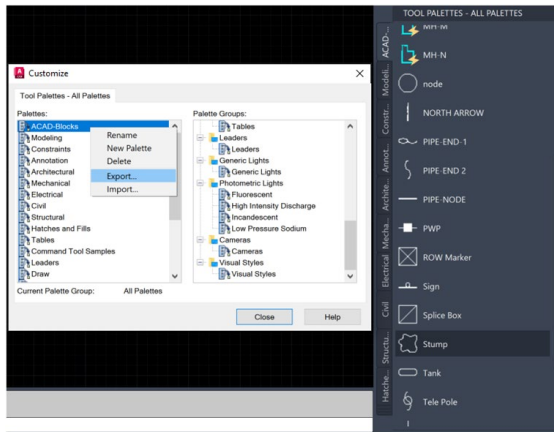
<https://help.bricsys.com/document?id=165079143552>

External Resource: Blade Help

https://help.bricsys.com/document/_dialogboxes--DB_bladebricscadlispadvanceddevelopmentenvironment/V23/EN_US?id=165079122213

Tool Palettes

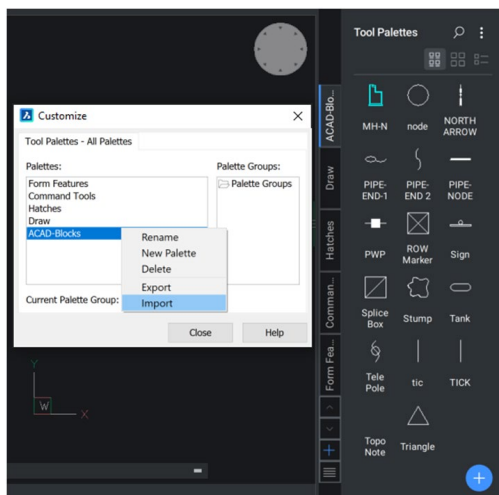
Tool Palettes improve user efficiency, are generally a part of “best practices” and can be imported from your existing CAD platform.



Export Tool Palettes

To export a Tool Palette (from AutoCAD®)

- On any drawing, enter CUSTOMIZE to open the Customize window.
- Right-click a tool palette and choose Export.
- Choose a location to save the .xtp file.
- On the target system (or on the target program), enter the CUSTOMIZE command.
- Right-click on any palette name and choose Import.
- Browse to the desired folder.
- Click Close



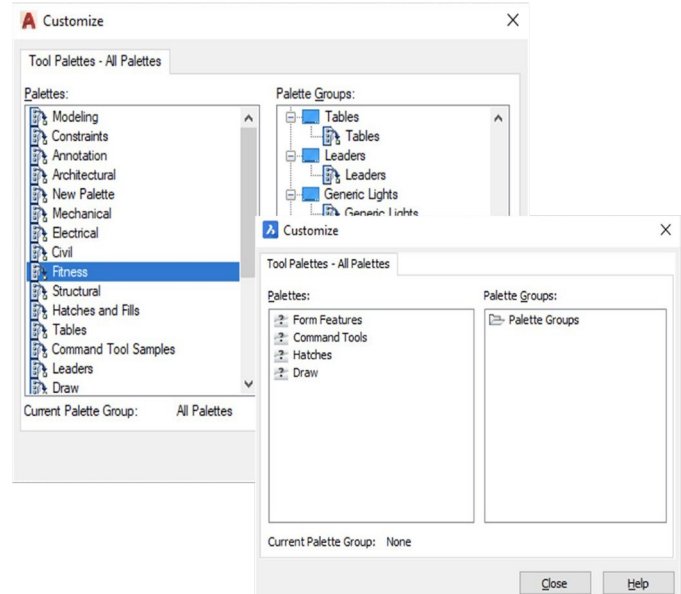
Import Tool Palettes

To import a Tool Palette (in BricsCAD®)

- Open the Tool Palettes panel.
- In the Tool Palettes panel, right-click and choose Customize Palette, which will open the Customize dialog box.
- In the Palettes panel on the Customize dialog box, right-click and choose Import in the context menu.
- On the Import Palette dialog, select a folder, then select a palette file (*.xtp).
- Click the Open button or double-click to import the palette. The palette is added to the Palettes list.
- Click the Close button to close the Customize dialog box.

Migrate Tool Palette components

- Export individual palettes as XTP from AutoCAD®
- Note pathing of files and edit if required
- Import into BricsCAD®
- Keep XTP's for later possible edits



External Resource: Tool Palettes Help Page

<https://help.bricsys.com/document?id=165079143757>

Plotters/PC3/PMP Files

BricsCAD® uses your current plotters, PC3 files, and PMP.

- Locate your current plotter files from the current location, and copy/paste them into the BricsCAD Support Folder.
- PC3 files are saved in the Plotconfig subfolder of your Roamable root folder.

Copy peripherals

- Use PLOTTERMANAGER command.
- Copy PC3/PMP files from an existing application into the PlotConfig window in BricsCAD.
- These files “wrap-around” system drivers so they may be copied directly as they are not proprietary.

This PC > OS (C:) > Users > AppData > Roaming > Bricsys > BricsCAD > V24x64 > en_US > PlotConfig			
Name	Date modified	Type	Size
PMP	8/26/2023 11:53 AM	File folder	
AutoCAD PDF (General Documentation).pc3	12/12/2022 12:57 PM	AutoCAD Plotter Configuration File	
Create a new plotter configuration	8/26/2023 11:52 AM	Shortcut	
Default Windows System Printer.pc3	8/4/2023 1:57 PM	AutoCAD Plotter Configuration File	
DWF6 ePlot.pc3	8/18/2009 3:29 PM	AutoCAD Plotter Configuration File	
ImagePrinting.xml	8/4/2023 1:57 PM	XML Document	
Print As BMP.pc3	8/30/2023 10:50 AM	AutoCAD Plotter Configuration File	
Print As JPG.pc3	8/30/2023 10:50 AM	AutoCAD Plotter Configuration File	
Print As PDF.pc3	5/4/2023 6:18 PM	AutoCAD Plotter Configuration File	

External Resource: Plotter Configuration Help Page

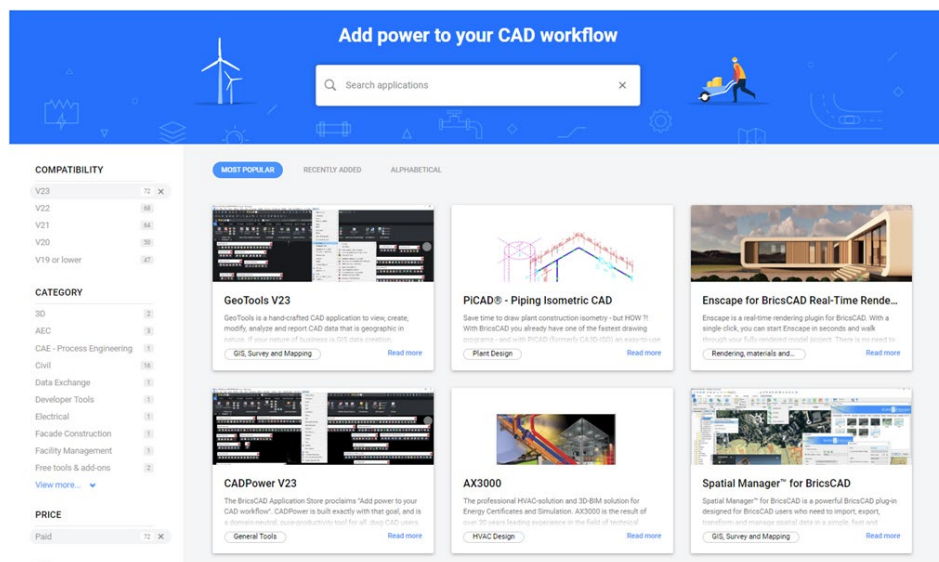
<https://help.bricsys.com/document?id=165079156143>

External Resource: Printing and Plotting Help Page

<https://help.bricsys.com/document?id=165079156041>

App Catalog

The App Catalog includes apps that developers, outside of Bricsys, created to address specific needs. Over 1500 external developers create apps for BricsCAD® and more than 400 of them publish their apps directly to the Bricsys App Catalog. You can download some apps and add-ons free of charge. Others are available for purchase from the publisher.



External Resource: BricsCAD.com App Catalog

<https://www.bricsys.com/applications>

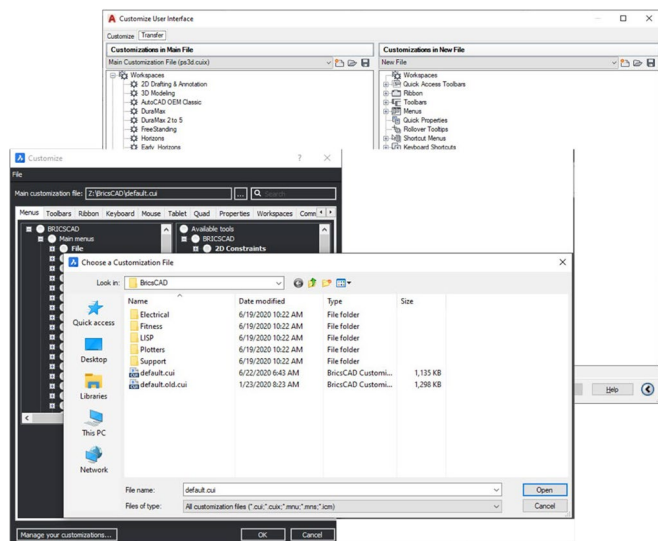
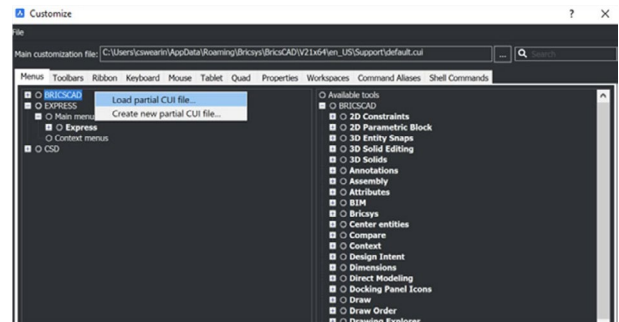
Make BricsCAD® look the way you want

The most effective way to adapt to BricsCAD is to make BricsCAD look and feel exactly like you want it.

The appearance of the BricsCAD application window varies slightly depending on which profile you selected. The main user interface elements, however, apply across profiles even if the tools differ. Those elements can be controlled through the settings, CUI, and profile manager.

Migrate CUI Components

- **Create** clean CUx with only custom elements
- **Open** the CUI in AutoCAD®; **Export** the custom CUI elements using AutoCAD® CUI Transfer Tab;
- **Save** Partial CUI.
- **Read** Partial CUI into BricsCAD® CUI
- **Open** the Default CUI in BricsCAD; **Right-Click** to “Load Partial CUI File”; **Select** the previously saved Partial CUI file, **Add/Load** elements to the workspace.



External Resource: Loading CUI files Help Page

https://help.bricsys.com/document/_guides--BCAD_customization--GD_loadingandunloadingcui/V24/EN_US?id=165079143653

Check the Settings and Profiles

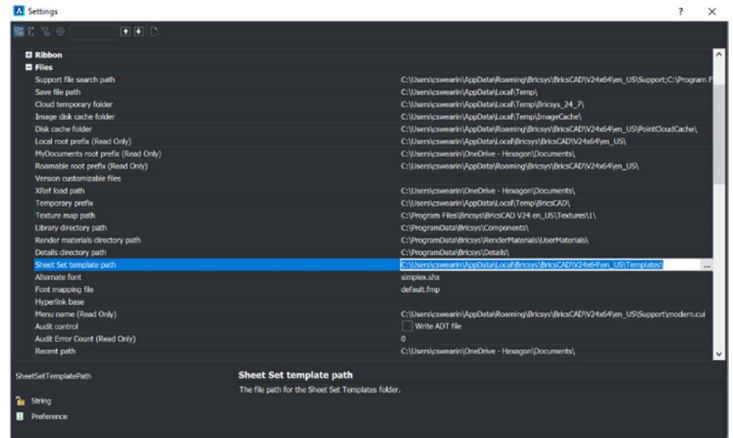
Keep in mind, we want to migrate all of the support files from AutoCAD® to BricsCAD. Eventually, Autodesk® will be removed from your machine, so the support files must be available. Do not remove AutoCAD® until the BricsCAD environment has been tested. Open .dwg with BricsCAD, and you're on your way.

Settings

Get familiar with the settings/options within BricsCAD®. Access by using the **SETTINGS** or **OPTIONS** command. Add support file pathing, change units, modify quad tools, set alternate fonts, template locations, etc. Use the search bar at the top to quickly isolate specific desired settings.

Sheet Set (.dst), Drawing Templates, Blocks

Sheet set files (.dst), drawing templates (.dwt), and blocks can remain in their current temporary local location. Using the “SETTINGS” command, browse to the desired pathing respectively, and change accordingly.



External Resource: Settings Help Page

<https://help.bricsys.com/en-us/document/bricscad/dialog-boxes/settings-dialog-box?version=V24&id=165079128414>

Profiles (.arg)

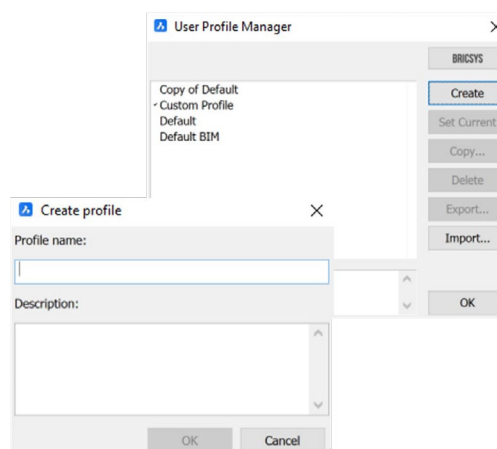
In BricsCAD®, you can customize the settings that control your drawing environment, which can then be saved in a user profile. You can create multiple user profiles, e.g., a profile to run BricsCAD with a white background and a limited set of toolbars and another profile with no command bar and all toolbars and snap settings needed to draw comfortably in 3D. User profiles can also be used when multiple users share the same computer, and each user likes to create their own drawing environment. User profiles can be exported to a file, which can then be imported to a different computer. This allows you to copy your settings to a new computer or to install the same settings on multiple computers.

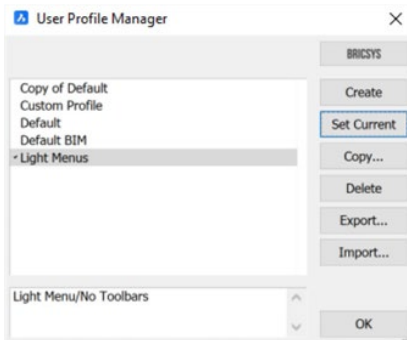
If you use third-party applications on top of BricsCAD, you might want to create a user profile to use with each of these applications.

When BricsCAD is running, launch the **PROFILEMANAGER** command.

Work with Profiles

- Use **PROFILEMANAGER** command
- Share ARG files
- Edit paths in the file if desired





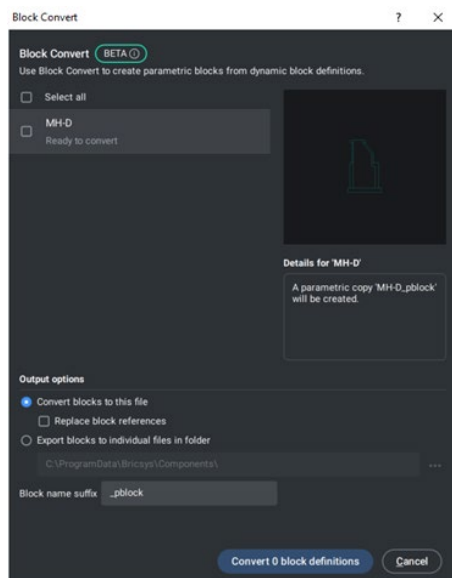
External Resource: Profile Manager Help Page

https://boa.bricsys.com/static/files/Parametric%20Blocks%20Explained_Booklet_EN_v2_102022-web.pdf

Convert your Dynamic Blocks

To support your migration from your legacy CAD, BricsCAD® can convert your existing library of Dynamic Blocks into our superior Parametric Blocks. The **PBLOCKASSIST/BLOCKCONVERT** command launches the Parametric Block Assist dialog that scans the file and identifies all Dynamic Blocks. The user can then select the blocks they wish to convert to Parametric Blocks, and with one click, instantly convert them. The conversion creates a new entity in the file itself, leaving the original Dynamic Blocks unchanged. You can also decide to export the new blocks to any folder, making it easy to access them from your Library Panel.

For more information on Parametric Blocks, as well as the **PBLOCKASSIST** command, we have a helpful guide; Parametric Blocks Explained.



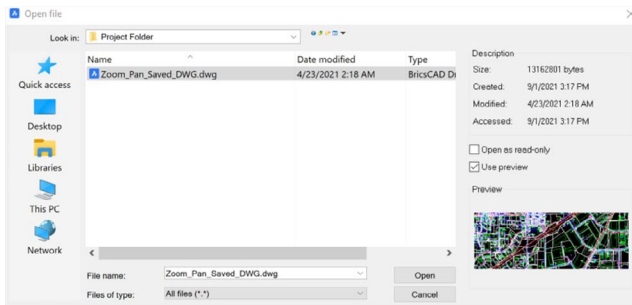
External Resource: Parametric Blocks Explained

https://boa.bricsys.com/ParametricBlocksExplained_Booklet_EN.pdf

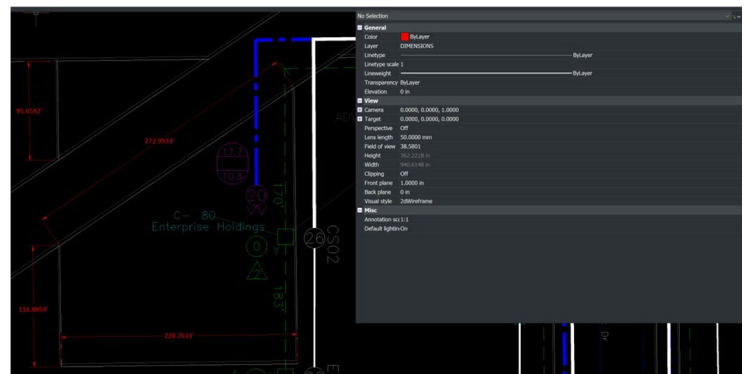
Step 4: Test a Project with BricsCAD®

BricsCAD® supports the same functionality including opening, editing, and plotting drawings. You'll find that many of your favorite and most common commands are similar, and function exactly as intended.

To test BricsCAD's compatibility, **Open** an existing drawing. Notice that the look and feel of your drawing are exactly the same. If inclined, open the same drawing with your other CAD software and compare.

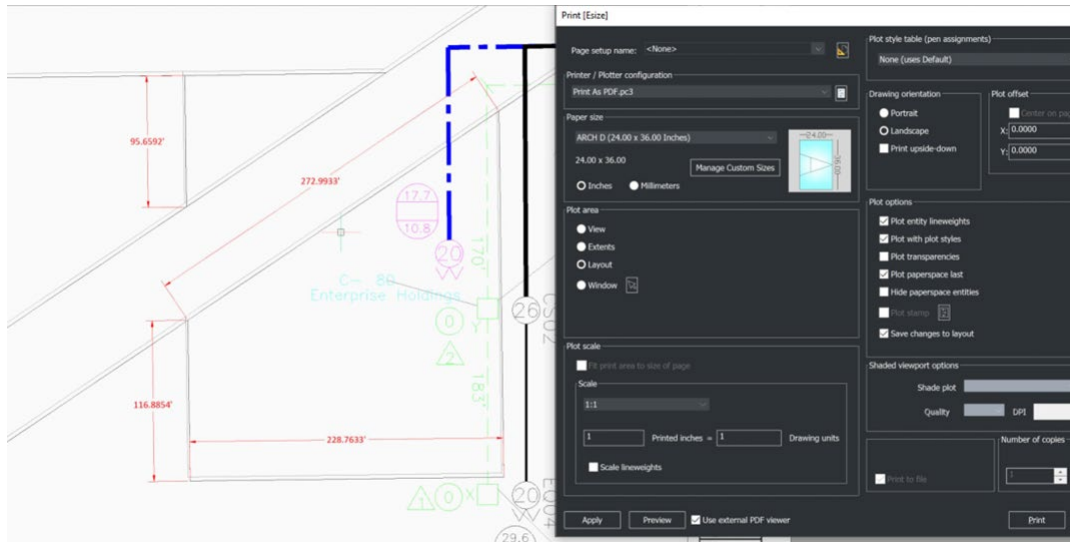


Modify entities within the existing drawing. Add text, insert blocks, draw linework, use snaps, check properties, and create dimensions just as you normally would.



Plot your drawing by using the **PLOT** command. Once you enter the command, the plot settings for your existing drawing will appear as defined.

You can plot to a folder location or directly to the plotter. Inspect the final output to validate that BricsCAD® plotting produces the expected results.



Guided Lessons for Migration Assessts and Configurations from AutoCAD® to BricsCAD:

<https://lessons.bricsys.com/p/from-autocad-to-bricscad>

This guide is to get you started with BricsCAD. It doesn't encompass every aspect of migration, other customizations, tools, development, and materials may also be needed.

For additional assistance and resources, please visit:

<https://www.bricsys.com/migrating-to-bricscad>

<https://lessons.bricsys.com/>

<https://www.bricsys.com>

All brand names and product names mentioned in this guide are trademarks or service marks of their respective companies. Any omission or misuse (of any kind) of service marks or trademarks should not be regarded as intent to infringe on the property of others. Bricsys® recognizes and respects all marks used by companies, manufacturers, and developers as a means to distinguish their products. Any additional person(s) may not claim authorship or ownership of the text or figures herein.

This guide is provided as is, without warranty of any kind, either express or implied, respecting the contents of this guide and any materials that may accompany it, including but not limited to implied warranties for the guide's quality, performance, merchantability, or fitness for any particular purpose. Neither the publisher, authors, staff, or distributors shall be liable to the consumer or any other person or entity concerning any liability, loss, or damage caused or alleged to have been caused directly or indirectly by this guide. © 2023 Bricsys® NV. All rights reserved.

What CAD professionals told us about migrating to BricsCAD®:

"After 28 years of using AutoCAD®, following a quick and easy installation, we seamlessly transitioned more than 1000 users with various years of experience to BricsCAD. The users are located around the globe, and they made the switch with no additional training required."

Lorelei Connors, CAD/Drafting Manager, Subsea 7

"BricsCAD makes it easy to transition from other CAD software. That process went very smoothly."

Technical Development Department at Nittetsu Texeng

"The transition from AutoCAD® to BricsCAD is actually very easy: all commands are the same, and I can continue to use the .dwg files that I created with AutoCAD®. After a morning, you will get the hang of BricsCAD."

Ben van Amersfoort, Owner Tekenbureau van Amersfoort

"The first advantage of BricsCAD is its pricing, combined with the perpetual licensing. The second big advantage is BricsCAD's high compatibility with other CAD software and the data files made with them."

Kunihiko Takemura, Technical Department General Manager, Takamiya

"A small team of two did all the preparations regarding our libraries and templates. Then we deployed BricsCAD running parallel to AutoCAD® LT to make sure we had a fallback if we needed it. When we made the migration from Windows 7 to Windows 10, we removed AutoCAD® LT and nobody ever noticed."

Steffen Lemmerz, Founding partner, SLIK Architekten

"Since there were both programs at the start of the transition, everyone could choose for themselves. After a short time, almost everyone switched over to BricsCAD."

Franz Dietz, CAD representative, EBB Ingenieurgesellschaft

"I'm surprised more people aren't using BricsCAD. I think that if everyone knew that they could get all the AutoCAD® features they need and not have to buy subscription, then they'd switch. Plus, you save money. It's a no-brainer."

Jason Spilker, Project Engineer, Vector Structural Engineering

You are not alone, find out why more and more CAD professionals are switching to BricsCAD:

<https://www.bricsys.com/customer-cases>

And have a look at the reviews on the G2 website:

g2.com/products/bricscad/reviews/bricscad-review-653216

What's next? Make the move to BricsCAD® now and accelerate your time to deliverable without compromising on performance, cost, licensing flexibility, and data security.